



BLIND MANUFACTURERS'
ASSOCIATION OF AUSTRALIA

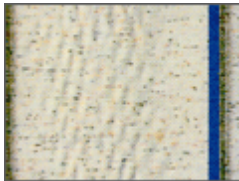
14 Lions Park Drive
Yatala Qld 4207
Telephone: (07) 3801 8811
Email: info@bmaa.net.au
ABN No: 91 093 073 208
ACN No: 093 073 208
www.bmaa.net.au

BMAA INDUSTRY GUIDELINE

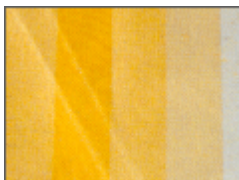
BMAA has prepared an Industry Guideline regarding **Awnings**.

IMPORTANT NOTE: Acrylic Fabrics Common Irregularities

The nature of the fabric is that, regardless of all the attention that is paid during manufacturing and preparation, you might note some natural "imperfections" after your awning is installed. These small irregularities in your fabric are perfectly normal and nothing to worry about.



Waffelbuilding or Veining - Subsequent to handling during fabrication and assembly, acrylic fabrics treated with resins containing fluoride may show "veining" visible against the sunlight caused by an optical effect (differences in the refractions of light).



White Lines or Folds - Subsequent to handling during fabrication and assembly, acrylic fabrics treated with resins containing fluoride may show small white traces that appear on the fabric due to the stiffness that is caused by the fluoride treatment. These lines are particularly visible in light fabrics as they are held up against the light.



Waviness OR Corrugation in the seam / weld area - As the fabric rolls up along the roller tube on the awning the seams will roll up with more accumulated material than the areas surrounding it. This difference in thickness may cause the fabric to wrinkle slightly around the seams. This may affect one seam but not the seam next to it.



These small irregularities in your fabric are normal and nothing to worry about. On the other hand, if you notice the slightest problem concerning the major qualities of your fabric within its warranty please let the supplier know.